

CP-1 Stationary Horizontal Compactor

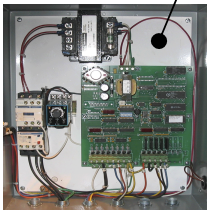
The CP-1 Stationary Horizontal Compactor Unit is suitable for light to medium-duty applications including restaurants, strip malls, and manufacturing facilities. Whether you are compacting cardboard or scrap steel the CP-1 has what it takes for reliable long-term operation.

Control

Simple one-touch operation!

A fully automated "auto-cycle function allows the CP-1 to run a complete compaction cycle with the single

An Integrated Circuit Board Control assures optimum compacting pressure.
Features board mounted status and diagnostic lights.



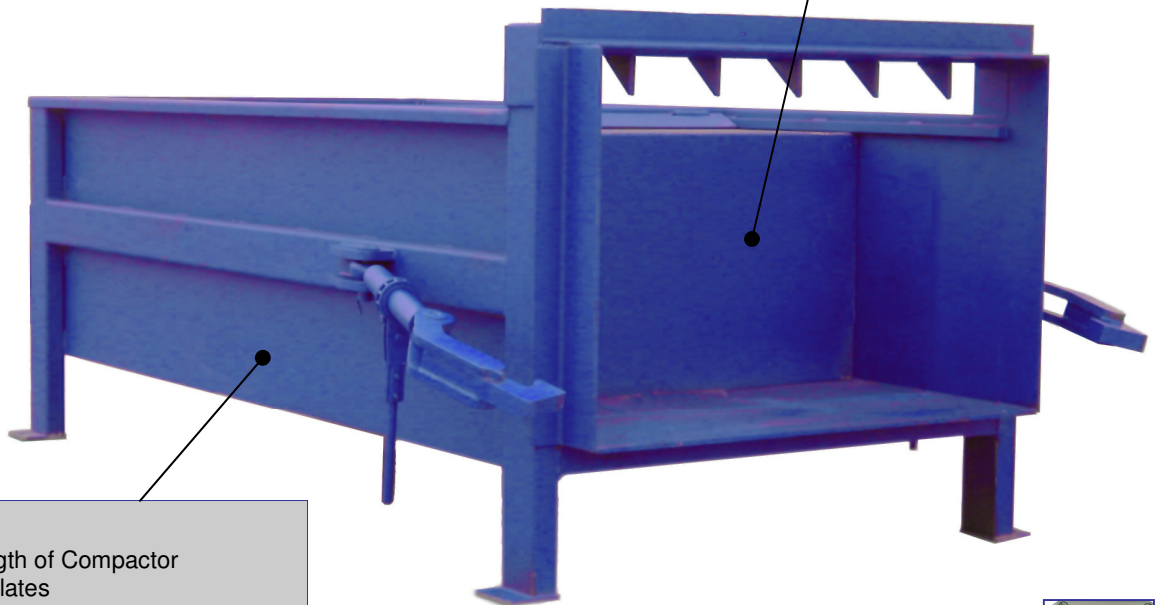
Wear Resistant

3/4" Ram Face

Abrasion Resistant Plate Floor Plate and Ram Base

Solid Bar Ram Guides

Reinforced Cylinder Connections with Integral Wide Flange Structural Beam Cylinder Abutment.



Rugged Construction

1/4" Plate Sidewalls Full Length of Compactor

12 Ga. Covers and Access Plates

Tube Steel Load Members

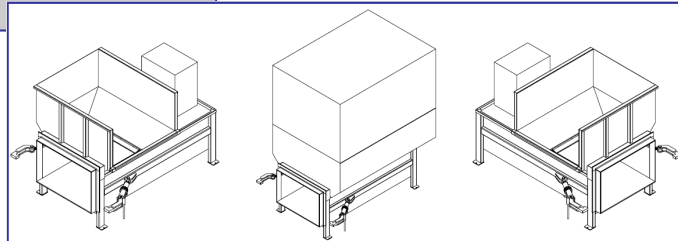
1/2" Structural Angle Exit Nozzle



Installation and Maintenance Services available to help you get that custom installation done right!

Complete line of Hopper and Enclosure options including customization to meet your needs.

The standard control panel includes a Keyed Start Switch, 80% and 100% Full Indicator lights, and Emergency Stop Button. An optional Manual Override control is also available!



Engineered and Life Tested to **Last** in their Intended Environment

385 Sumpter Road • P.O. Box 68 • Belleville • MI 48111-0068 • (734) 699-5561 • Fax (734) 699-0360

On the Web at: <http://www.contractwelding.com>

CP-1 Stationary Horizontal Compactor

Specifications

Manufacture's Rated Size	1.00 Cubic Yards
Rated Size	1.25 Cubic Yards
Cycle Time	58 Seconds
Capacity Per Hour	60 Yards
Clear Top Opening (L x W)	36" x 45 1/2"
Ram Face Dimensions (W x H)	24" x 48"
Ram Penetration	12"
Cylinder Bore, Rod & Stroke	5" x 2 1/2" x 48"
Operating Pressure	
Normal	1500 PSI
Maximum	2000 PSI
Ram Force Rating	
Normal	25.56 PSI / 29,452 Lbs
Maximum	34.08 PSI / 39,270 Lbs
Motor (HP)	5 HP
Pump (GPM)	7 1/2 GPM
Tank Capacity	20 Gallons
Shipping Weight	4,250 Lbs (approx)
Construction	
Frame	
Floor - AR Plate	1/2"
Floor Plate Supports	3" Channel
Side Plates	1/4"
Side Reinforcements	4"x2"x3/16" Tube
Breaker Bar	6"x 3" x 1/2" Angle Reinforced
Ram Hold Down Bars	1 1/4" x 1 1/4" Bar
Load Binder Hook-Up	20,000 Lbs Capacity
Ram	
Face Plate	3/4"
Floor - AR Plate	1/2"
Side Plates	3/8"
Top Plate	1/4"
Top Plate Reinforcement	3"- 4.1 Lb Channel

All Specifications are subject to change without notice.

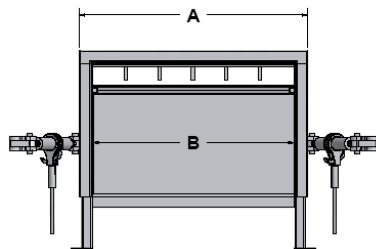
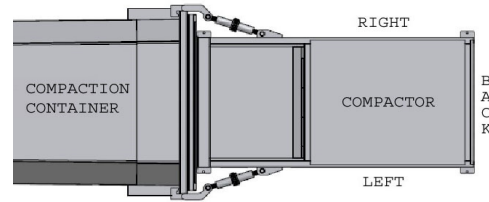


Illustration for reference only

A	B	C	D	E	F	G	H	I	J	Capacity
56 1/2"	48"	56"	34"	18"	4"	36"	103"	46"	107"	1 Yard

Installation Requirements

Typical Installation Layout



Minimum Recommended Requirements:

- Concrete Pad: 10' x 16' (May be made larger to suit)
4,000 PSI Reinforced, 6" Thick
- (4) 3/4" x 4 3/4" Anchor Bolts

Minimum Clearance Requirements:

- 12" From Back of Compactor to Wall
- 36" From Right & Left of Compactor to Wall

Electrical Disconnect Requirements

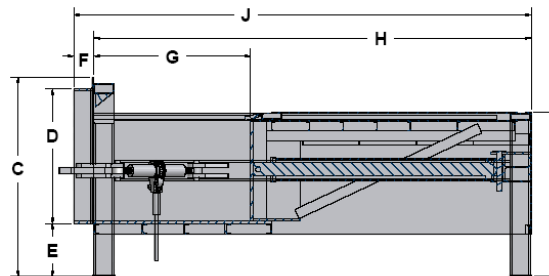
5 HP Motor		
Voltage	Amperage	Fuse
208	30	25
240	30	20
480	30	10

Standard Features

- 80% & 100% Full Indicator Lights
- NEMA 4 Control Enclosure

Available Options

- Hoppers & Enclosures - Any Configuration
- Oil Heater



Distributor

385 Sumpter Road • Belleville • MI 48111-2932 • Phone (734) 699-5561 • Fax (734) 699-0360
P.O. Box 68 • Belleville • MI 48112-0068
On the Web at: <http://www.contractwelding.com>