

# Snow Pusher Loader Mount

## Specifications

Model	Weight (Approx.)
SPLR-1048	3,500 Lbs
SPLR-1248	4,100 Lbs
SPLR-1448	4,350 Lbs
SPLR-1648	4,600 Lbs
SPLR-1848	4,840 Lbs
SPLR-2048	5,100 Lbs

## Construction

Main Push Plate	1/4" x 48"
Side Plates	3/4" x 48" x 48"
Integrated Bucket Mounts	3/4" (3 per on 12' and up)
Bucket Mount Supports	6" x 2" x 1/4" Tube
Edge Mounting Bracket	6" x 4" x 1/2" Struct. Angle
Horizontal Mid Brace	12" Struct. Channel
Horizontal Top Brace	6" Struct. Channel
Cutting Edge	1 1/2" x 10" Rubber
Rubber Hold Down	3/8" with 3/4" Bolts
Skid Shoes	1" AR450
Skid Mount Plate	3/8" with 3/4" Bolts

All Specifications are subject to change without notice.

## Standard Features

- Full Weld Construction
- Adjustable & Reversible Rubber Cutting Edge

## Available Options

- Steel Cutting Edge
- Customized Mounts

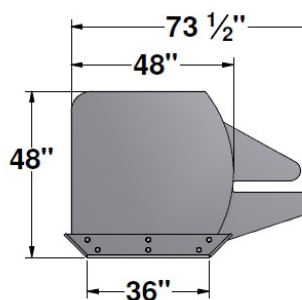
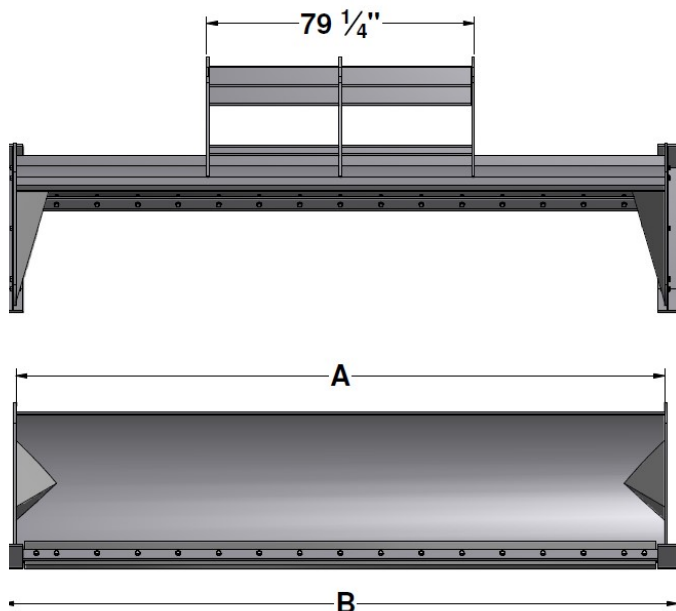
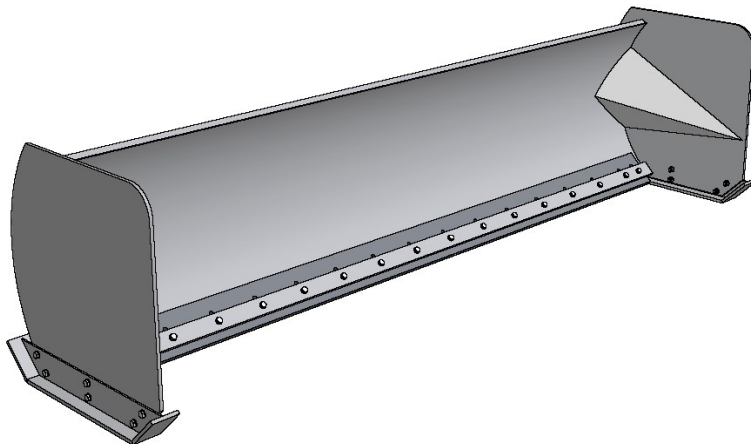


Illustration for reference only

Model	A	B
SPLR-1048	10'-0"	10' 8"
SPLR-1248	12'-0"	12' 8"
SPLR-1448	14'-0"	14' 8"
SPLR-1648	16'-0"	16' 8"
SPLR-1848	18'-0"	18' 8"
SPLR-2048	20'-0"	20' 8"



Distributor

385 Sumpter Road • Belleville • MI 48111-2932 • Phone (734) 699-5561 • Fax (734) 699-0360  
 P.O. Box 68 • Belleville • MI 48112-0068  
 On the Web at: <http://www.contractwelding.com>